

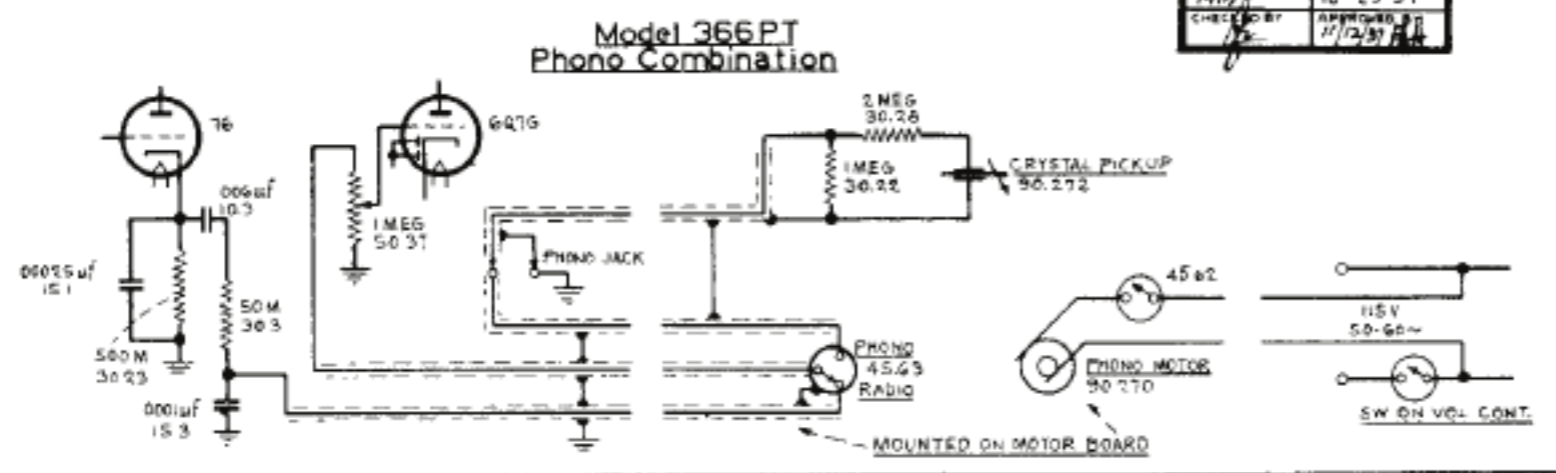
**BAND SWITCH POSITIONS**  
 ○ SHORT WAVE  
 ○ BROADCAST  
 ○ AUTOMATIC (D.C. ONLY)

⊥ = CHASSIS  
 M = THOUSAND OHMS  
 Ⓢ = SPEAKER PLUG & SOCKET  
 No. 1 PRONG OF OCTAL SOCKETS GROUNDED

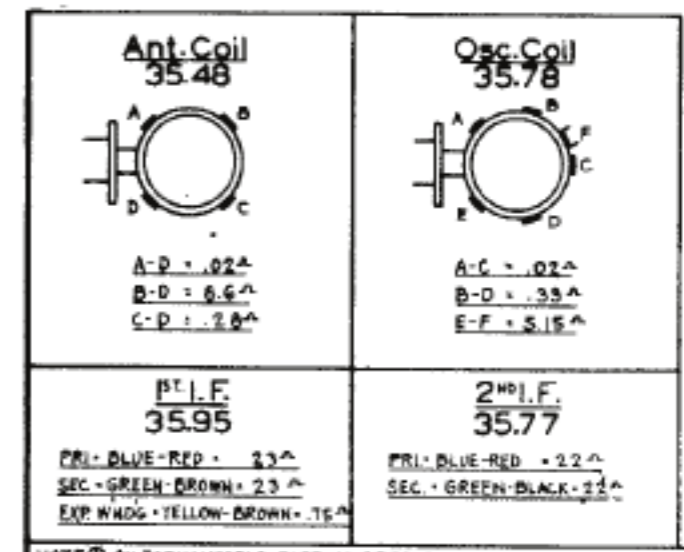
A-A PART NO. 25.105  
 C-C " 25.106  
 E-E " 25.107

I.F. Peak = 456 Kc.

FADA RADIO & ELECTRIC CO.  
 LONG ISLAND CITY, N.Y.  
 MODELS 366 & 366PT  
 DRAWN BY: [Signature]  
 DATE: 10-23-37  
 CHECKED BY: [Signature]  
 APPROVED: [Signature]



NOTE (3) ON EARLY MODELS I.F. PART NO. 35.69 IS USED IN PLACE OF 35.95



NOTE (1) ON EARLY MODELS, PART NO. 25.11 IS USED IN PLACE OF PART NO. 25.06  
 NOTE (2) ON EARLY MODELS 10M RESISTOR - PART NO. 30.31 IS USED IN PLACE OF 35.61 & R.F. CHOKER 35.61 IS USED IN PLACE OF 100M-30.24